

Ride Name: Village Tour
Grade: Intermediate
Map Required: OS Explorer 265
Total Distance: 29.0Km (approx.)
Approx. Ride Time: 3hrs
Total Height Climbed: 490m

Cycling Legend










ROUTE A road B road C road Track

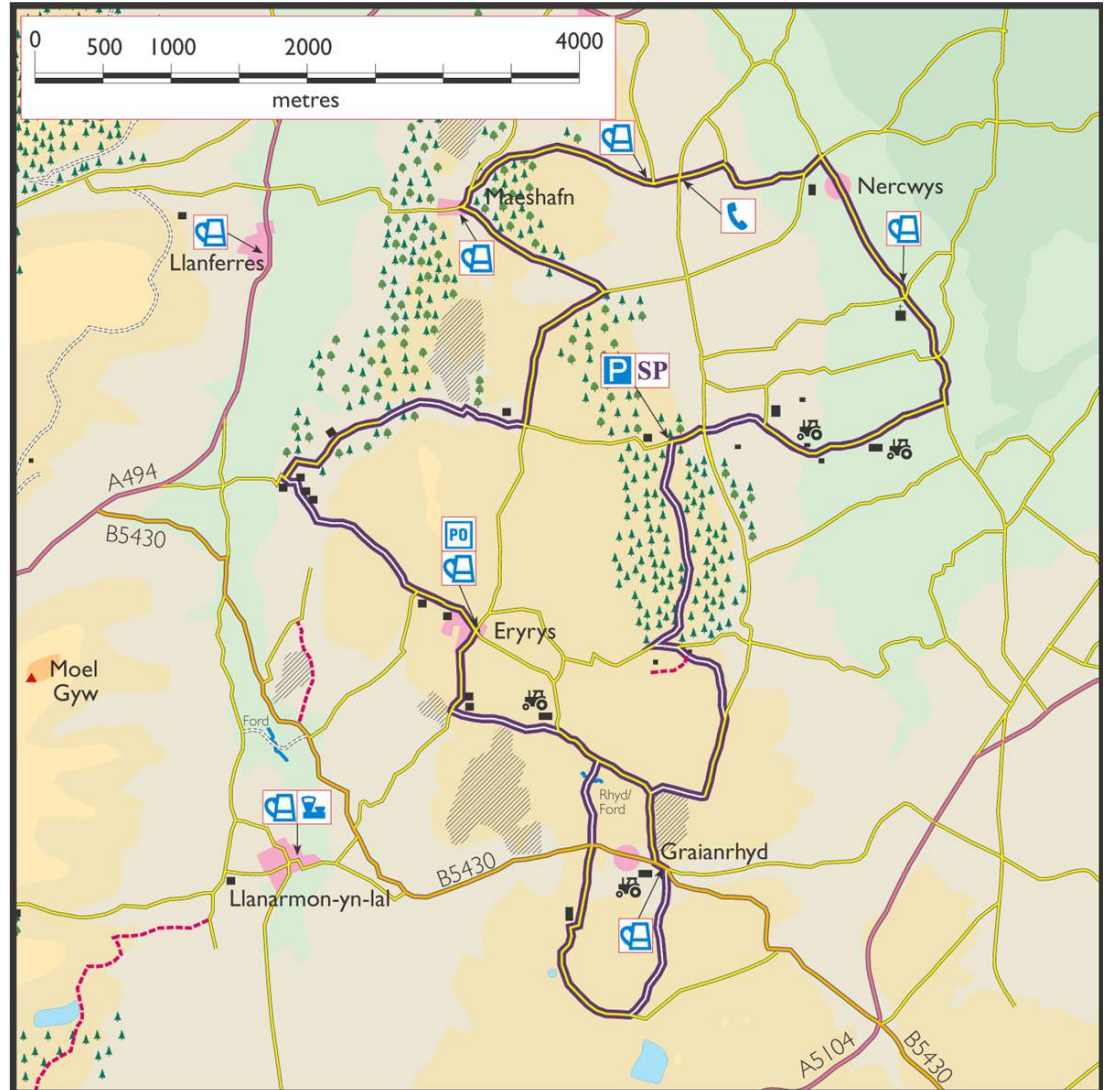
The route is shown as a broad purple line with the type of road and surface inset.

----- Other Bridleway

These maps are based on the 1947 OS 1" to 1 mile map, and updated from ground/bike surveys and aerial photography. © Denbighshire County Council 2003. It is recommended that you purchase the latest OS Explorer map or more detailed mapping.

Key to symbols

-  Start Point
-  Car Parking
-  Pub
-  Cattle Grid
-  Post Box
-  Information
-  Cafe
-  Public Telephone
-  Farm



Symbol	Description	Distance (Km)
SP	Nercwys Forest Car Park.	
	Through gates into forest, follow main track to the end.	
	Turn left at end of track onto tarmac road. Turn right almost immediately onto bridleway.	1.85
	At the end of the track turn right onto tarmac road.	3.0
	Turn right onto track, past quarry on left, at end of track turn right onto road.	3.75
	Turn left, through gate onto bridleway.	4.8
	End of track, go through gate and straight across road.	5.6
	Past farm buildings and straight on at junction.	6.55
	Turn left onto signposted bridleway and down technical descent to farm.	7.6
	Bear right at bottom of track.	8.65
	At junction turn left towards pub, then straight across crossroads up steep hill.	9.0
	Continue past quarry, at the crest of second climb (after bends) turn left onto track and bear right down track.	10.85
	At end of track turn right up steep hill.	11.85
	At crossroads in village turn left.	12.5
	Where road turns left, continue straight on onto bridleway.	13.3
	When singletrack ends, follow tarmac road to T-junction and turn right up hill. Road turns into track, follow to the quarry and turn right, uphill away from quarry.	14.7

Turn left at crossroads.	17.15
Double back left in direction of Meashafn village.	18.5
At village crossroads bear around road to the right, taking 1st right after this junction.	20.0
At pub, carry straight on down hill. Continue straight on at bottom of hill by phone box.	21.9
At left hand corner at bottom of hill turn right onto track.	22.45
At main road turn left.	23.25
Turn right at crossroads through village, past pub.	23.5
Take the 2nd right after pub.	25.9
Pass 2 farms, at right hand corner continue straight on onto bridleway.	27.55
At crossroads continue straight across back to start point.	28.25