

**Ride Name:** Almost The Delyn  
**Grade:** Hard/Advanced  
**Map Required:** OS Explorer 265  
**Total Distance:** 78.8Km (approx.)  
**Approx. Ride Time:** 8hrs  
**Total Height Climbed:** 1605m

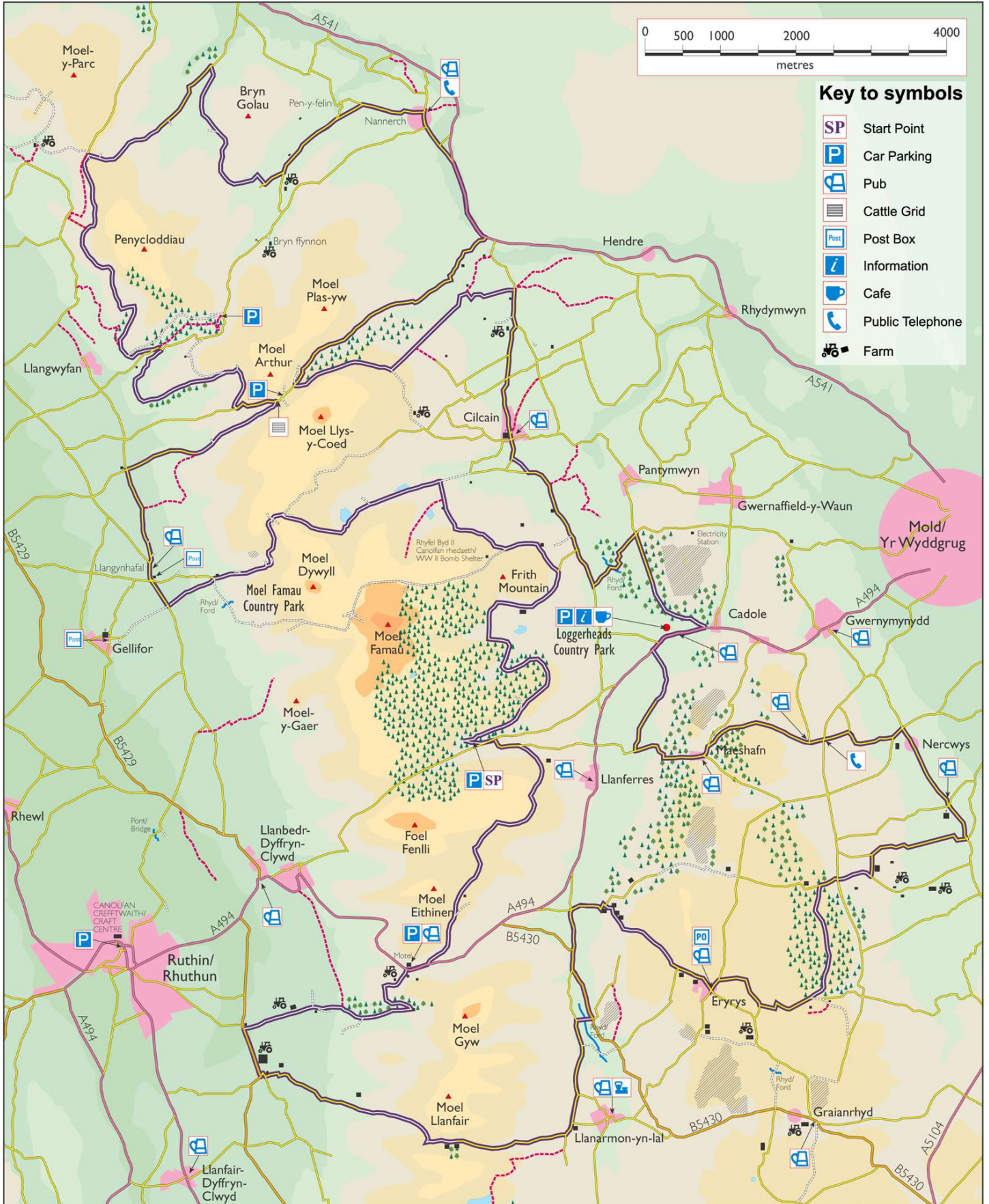
## Cycling Legend

**ROUTE** A road B road C road Track

The route is shown as a broad purple line with the type of road and surface inset.

----- Other Bridleway

These maps are based on the 1947 OS 1" to 1 mile map, and updated from ground/bike surveys and aerial photography. © Denbighshire County Council 2003. It is recommended that you purchase the latest OS Explorer map or more detailed mapping.



Symbol	Description	Distance (Km)
SP	Main Car Park, Moel Famau.	
	<b>Head up forest track directly ahead of entrance barriers and bear right onto forest road.</b>	
	Continue up track passing 3 left hand turns and descend to T-junction turning right.	2.4
	<b>At end of path drop down right, through gate.</b>	<b>3.0</b>
	Continue along path passing through 2 fords and onto surfaced road. Turn left at first junction after surfaced road begins.	4.6
	<b>Continue along bridleway through gates, bearing right at fork in path.</b>	<b>5.5</b>
	Turn left at T-junction with large track.	6.9
	<b>Continue to end of track and go through small gate on left.</b>	<b>8.1</b>
	Pass over small stream at plank bridge and continue up bridleway straight ahead.	8.4
	<b>At junction with larger track, turn left up to ridge. Continue straight on over the ridge, and descend to end of track.</b>	<b>9.4</b>
	Continue on surfaced road, turning left up track and through gate.	10.9
	<b>Once through the gate, follow fence line on the right, through small gate and down singletrack descent to road. Turn right.</b>	<b>11.6</b>
	Continue through village of Llangynhafal and turn right at crossroads.	13.6
	<b>Head up steep climb onto unsurfaced track and continue to climb to the top. At road turn left.</b>	<b>16.0</b>
	Turn right onto bridleway.	16.6
	<b>Bear left at small pond.</b>	<b>17.2</b>
	Bear left at fork in bridleway.	17.3
	<b>At road turn left.</b>	<b>19.4</b>
	Bear right onto track on left hand corner, continue through trees out through gate and follow track to the end.	19.5
	<b>Turn right on semi surfaced road and downhill on track. Road becomes surfaced again.</b>	<b>23.2</b>
	Take first right, uphill and follow road round to right.	25.4
	<b>Bear left onto bridleway.</b>	<b>26.1</b>
	Bear left at fork in track.	27.2
	<b>Turn left at surfaced road and left at next T-junction.</b>	<b>27.7</b>
	Bear right at next 2 junctions.	29.4
	<b>Turn right at T-junction.</b>	<b>30.3</b>
	Turn right onto main road.	31.5
	<b>Turn right on left hand corner up surfaced road, next to gate house.</b>	<b>32.7</b>
	Climb to top of hill, turn left at end of forest, before small car park onto bridleway.	36.1
	<b>Turn left through gate down wooded track.</b>	<b>37.5</b>
	Bear right at fork in track.	39.0
	<b>At surfaced road turn right, continue into village of Cilcain.</b>	<b>39.7</b>
	Straight over crossroads in village.	41.4
	<b>Turn left on steep descent onto bridleway, follow to end.</b>	<b>41.6</b>
	Turn left at road.	41.9
	<b>Turn left after phone box, at farm buildings, down through ford and climb up other side.</b>	<b>43.7</b>
	Turn right at crossroads and continue over top of Loggerheads Country Park on bridleway.	44.8
	<b>At main road turn right.</b>	<b>46.2</b>
	Opposite garage turn left over bridge and follow bridleway up onto surfaced road.	47.0
	<b>Turn left at junction and climb up to village of maeshafn.</b>	<b>48.1</b>
	At village crossroads bear left then next right.	49.6
	<b>At junction with pub, continue straight on downhill and straight on at next junction next to phone box.</b>	<b>50.8</b>
	At bottom of hill on left hand corner, turn right down right hand track.	51.3
	<b>At main road turn left then immediately right. Continue through village of Nercwys and past pub.</b>	<b>51.9</b>
	Turn right at crossroads and climb hill passing right hand junction on corner.	53.9
	<b>On left hand corner before farm, turn right up bridleway and climb to road at top.</b>	<b>55.2</b>
	At crossroads with surfaced road, continue straight on.	56.0
	<b>Turn left onto forest track.</b>	<b>56.3</b>
	At end of track turn right onto surfaced road.	57.9
	<b>Bear right at junction.</b>	<b>58.7</b>
	Turn left at T-junction and right at crossroads in village of Eryrys.	59.4

<b>Continue out of village and straight on at tight left hand corner, up road signposted 'No through road'.</b>	<b>60.1</b>
At end of track continue on surfaced road and turn left at junction.	61.5
<b>Turn left at next T-junction.</b>	<b>62.1</b>
Continue along road, turning right opposite left hand junction, down track through ford.	63.6
<b>Turn left at junction with surfaced road.</b>	<b>63.8</b>
At fork in road bear right.	64.8
<b>At next junction continue straight on.</b>	<b>65.3</b>
Bear right up surfaced road and continue to top.	65.5
<b>At top of climb continue straight on down into vale on bridleway.</b>	<b>67.1</b>
Join surfaced road and continue down to T-junction.	68.5
<b>Turn right at T-junction.</b>	<b>69.7</b>
Right at junction.	69.9
<b>Turn right up farm drive, continue past farm yard and uphill, bearing left after water works.</b>	<b>70.6</b>
At top of surfaced road bear right up track into trees, continue to climb back up to the ridge.	71.9
<b>At junction with main road turn right (Caution, Dangerous Junction) over brow of hill and turn 1st left onto track, follow waymarked bridleway.</b>	<b>73.9</b>
At fork in bridleway, bear left up grass bank towards house.	75.7
<b>Continue to follow bridleway until reaching minor surfaced road. Turn left.</b>	<b>77.9</b>
Turn left at T-junction.	78.36
<b>Finish back at car park.</b>	<b>78.8</b>