

**Ride Name:** Over The Top  
**Grade:** Intermediate  
**Map Required:** OS Explorer 265  
**Total Distance:** 34.0Km (approx.)  
**Approx. Ride Time:** 3.5hrs  
**Total Height Climbed:** 545m

## Cycling Legend










ROUTE A road B road C road Track

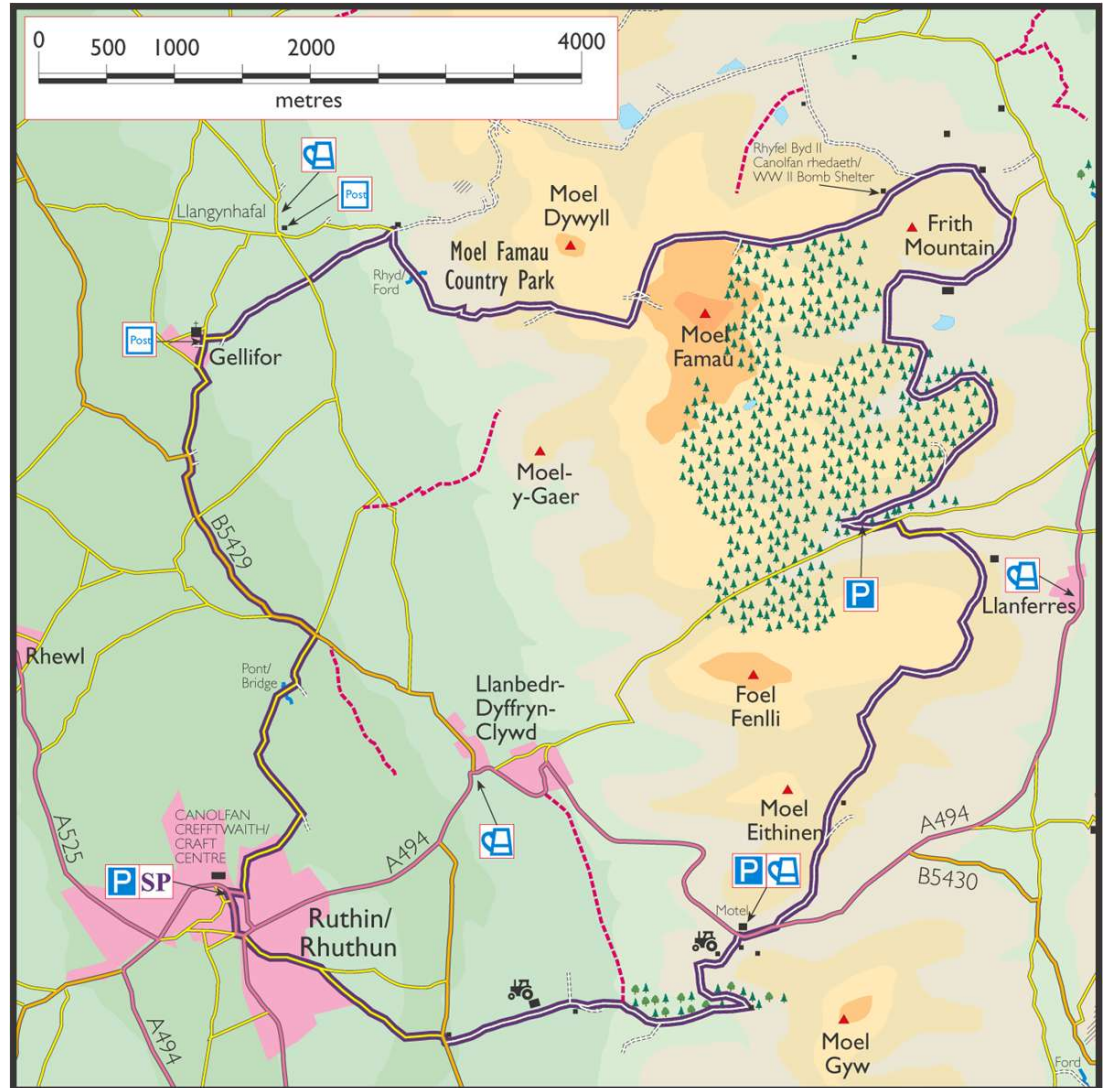
The route is shown as a broad purple line with the type of road and surface inset.

----- Other Bridleway

These maps are based on the 1947 OS 1" to 1 mile map, and updated from ground/bike surveys and aerial photography. © Denbighshire County Council 2003. It is recommended that you purchase the latest OS Explorer map or more detailed mapping.

## Key to symbols

-  Start Point
-  Car Parking
-  Pub
-  Cattle Grid
-  Post Box
-  Information
-  Cafe
-  Public Telephone
-  Farm



Symbol	Description	Distance (Km)
SP	Car park opposite Craft Centre in Ruthin.	
	<b>Turn left out of car park.</b>	
	2nd exit off roundabout.	0.05
	<b>Turn left immediately after the 'Anchor' Pub and pedestrian crossing.</b>	<b>0.5</b>
	At top of short climb follow road around to the right.	1.35
	<b>At road junction turn right, then immediately left up farm track.</b>	<b>2.55</b>
	Continue straight past farm yard and up surfaced climb. At house, continue straight on into trees on unsurfaced track.	4.0
	<b>Bear left, and continue to climb along tree line.</b>	<b>4.7</b>
	Continue along track until reaching main road and 'The Clwyd Gate' Inn. Turn Right onto main road. (CAUTION, crossing on brow of hill.)	6.35
	<b>Over the brow of the hill bear left up marked bridleway and over cattle grid.</b>	<b>6.6</b>
	Bear left up grass bank and through gate.	7.7
	<b>Continue through gates, bear left in dip up grassy climb to house.</b>	<b>8.45</b>
	Turn right after gate and proceed through double gates past house.	8.8
	<b>Upon meeting Tarmac road after fast descent, turn left.</b>	<b>11.05</b>
	Turn left at T-junction.	11.75
	<b>Turn right into forestry car park.</b>	<b>12.25</b>
	Head past car park barriers and straight up onto forest road bearing right at top.	12.5

<b>Climb to top of hill and begin to descend on same track.</b>	<b>13.55</b>
After long descent, follow road to the right and climb short hill.	15.55
<b>At the end of track, drop down left and over stile.</b>	<b>16.5</b>
Continue along track through 2 fords, until track joins tarmac road.	17.7
<b>Turn left up track past house onto bridleway.</b>	<b>18.6</b>
Follow bridleway through gates, at fork in bridleway turn left up steep climb.	19.2
<b>Continue up climb through gates, past forest on left, onto singletrack, until meeting fence line and gate. Through gate, across footpath, following blue bike symbols.</b>	<b>21.9</b>
After grass descent, follow track through small ford and along fence line.	23.6
<b>At gate, follow fence line downhill, left, and pass through small gate in corner onto singletrack descent.</b>	<b>24.5</b>
At crossroads with tarmac lane, continue straight over into wooded singletrack.	25.35
<b>When track ends, follow tarmac road to T-junction and turn left.</b>	<b>26.3</b>
At T-junction turn left.	26.7
<b>Take a left turn, sign posted with a blue and white bicycle sign.</b>	<b>29.7</b>
Follow road back into Ruthin, turn right at T-junction.	32.85
<b>At roundabout take the 4th exit back to car park.</b>	<b>33.0</b>